

Where business is in the air!

Presenting some of the finest business locations in Pune.



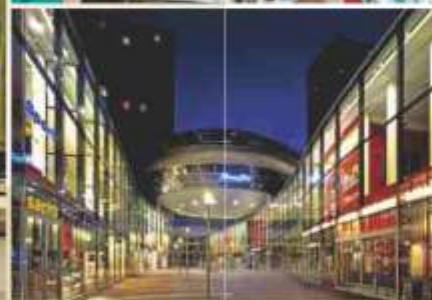
Corporate Office : 'PSC House', Dr. Keshar Road, Off Prabhat Road, Pune - 411 004
Call : (020) 3939 4949 | E-mail : info@pscl.in | www.pscl.in

Mumbai Office : 'Vaibhav Chambers', 1st Floor, Opp. Income Tax Office,
Bandra - Kurla Complex, Bandra (East), Mumbai - 400 051, Call : (022) 3065 9595 / 96

PUNE | MUMBAI | NASHIK | KOLHAPUR | CHIPLUN | RATNAGIRI | BENGALURU



Disclaimer: The plans, specifications, images and other details here are only indicative and the developer/owner reserves the right to change any or all. The printed material does not constitute a contract / offer of any type between the developer/owner and the recipient. Any purchase / lease of this development shall be governed by the terms and conditions of the agreement for sale/lease entered into between parties and no details mentioned in this printed material shall in any way govern such transactions.



Pune is any retail entrepreneur's dream come true. With a population of over 50 lacs, it is one of the fastest growing metros in India. More importantly, being a hub of sunrise industries like IT, Auto, Education and Real Estate, it is home to a large pool of upwardly mobile, affluent young professional that aspire for better quality of life and therefore more and more products and services.

To ride this wave of business opportunities, you need to spot one of those points where city's growth is concentrated and then...keep hearing the happy sound of the cash registers ringing!

We are happy to present a series of such locations that are a perfect blend of captive customers, rapidly growing surroundings and the power of Pune's most respected Real Estate Brand.

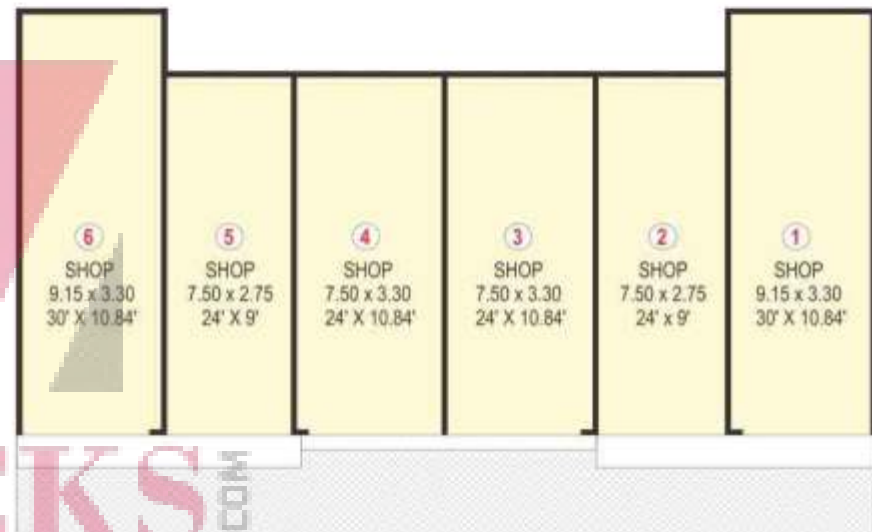


A proven model of business success!

Shops @
Rajas
GARDEN
at Model Colony



SHOPS PLAN



Area Statement (In sq.ft.)

Shop No.	Carpet Area
1	326 sq.ft.
2	222 sq.ft.
3	267 sq.ft.
4	267 sq.ft.
5	222 sq.ft.
6	326 sq.ft.

Model Colony is one of the top residential areas in the city and a great market for many businesses. Rajas Garden, a well established society is an ideal location for your business.

